

blue color sprayed glass candle containers wholesale





## No second Co.in China

Such a large and abundant sample room

## No second Co.in China

Our design team achieve Customers' Ideas becoming creative fragrance products and sell them very well



## No second Co.in China

Our QC is more QC than our customer's QC

### Product Description

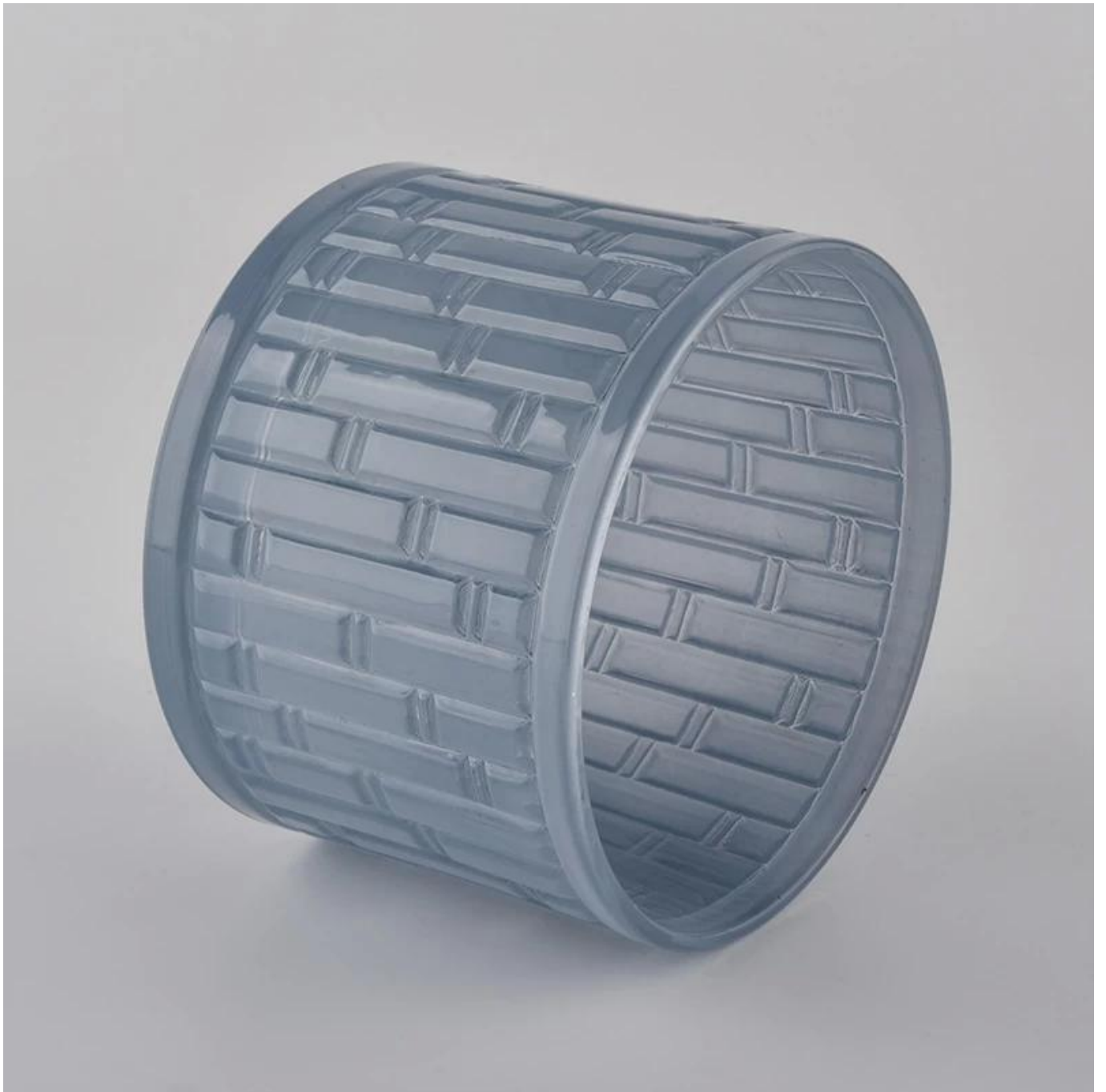
---

All the pictures on this site are copyrighted by Sunny Glassware. Any unauthorized copy will

be regarded as copyright infringement.

This **candle bowl** is made of sodalime in high quality. It is suitable for all kinds of candle or soy wax. We can do any customized print on the glass. Finish MOQ is 3000pcs per design.

















<b>Product Name</b>	blue color sprayed glass candle containers wholesale
---------------------	--

<b>Sample time</b>	1. 5 days if at exist shaped and size of glass 2. 15 days if need new shape or size of glass
<b>Measure(mm)</b>	SGHY20060603 Top dia: 114mm Bottom dia: 114 mm Height: 81mm Weight: 584g Capacity: 506ml blue color sprayed glass candle containers wholesale
<b>Packing</b>	Normal packing,Individual gift box, PVC box, window box, color box, white box, etc
<b>Delivery time</b>	Within 35 days after the sample and order confirmed
<b>Payment term</b>	30% deposit by T/T in advance and the balance against the copy of B/L
<b>Shipment</b>	By sea,by air,by Express and your shipping agent is acceptable
<b>Usage Occasion</b>	Home decor,Wedding Decoration,Wedding Favors,Decoration enhancement,

## **Process Craft**

---





# DEEP PROCESSING



**01**  
**ELECTROPLATING**

**02**  
**LASER ENGRAVING**



**03**  
**SPRAYING**

**04**  
**VACUUM  
ELECTROPLATING**



**05**  
**SCREEN PRINTING**

## Service Story

---



## SERVICE STORY

Someone ask me, why Sunny Glassware is the supplier of 80% fragrance brands in the United State, take a second to listen to my story about candle holders order, you will understand Sunny always stay with you whatever it happens.



Last summer was really a great experience to us, J placed a big order with mass candle holders to Sunny Glassware at August 2018, everyone was so exciting and wanted to make it perfect .

Everything goes very well at the beginning, fast move, perfect communication, all is good. A small accessory became a big bomb which is out of our expectation, J wanted us to buy this small accessory in China but he told us this is a very difficult stuff, we digged 7 factories and one of them told us they can produce it. We are happy to know that and we took J and his designer K to the factory to have a look, well, J is really a smart person , he told me this factory can not produce that stuff when he first step into the workhouse, because he did not see a machine that can produce it since he has visited a factory in the US who can produce it. We have been asking the factory for a couple of questions and they were getting impolite and impatient, J could tell from his face and he just run away very angry. I feel very sorry to J because we did not check it carefully with this factory and made him coming with no efforts. J is really great person and he never angry on me, he introduced a new factory that he found from his friends and wanted us to go, it was close to Chinese Lunar New Year, we booked the first class air tickets and our purchase manger Allen fly to the factory himself, it turns out this factory can not produce it as well, J has to produce it in the US and ship it to us for application finally.



The first time when he shipped 200K pcs , all were melt because of hot temperature, it's really a big waste of material and air freight, it really took so long time to get the second shipment, timing left to us is very tight, we found out a solution which is to air ship it by cold chain transport and keep the accessories along with air condition 24 hours, we had to increase labor costs to have people work 6 more hours a day to get candle holders done in time, all problem resolved and things produced well. Summer is the typhoon season we call it, two big typhoon in a month forced the custom to close the port which is the closest port to our factory, the delivery time was being a problem for J, we had to ship all 20 containers to the port 1000 Kms away to get those shipped in time, but this increase the extra truck costs to us like USD 16,000 and all absorbed by Sunny.

Finally, no one get compensated, all things shipped in time, we all are happy with that, this enable us to be a trust worthy partner to J, and our business is getting prosperous day by day!!!

# PACKING

We have Normal packing,PVC box,  
Window box,carton box,pallet  
Color box,White box,ect.  
of course,we can customize Individual  
gift box for you.



# Different From The Peer

- Own professional shipping company( Shenzhen Sunny Worldwide logistics)
- 20+ years freight history and WCA members.



Factory





# FACTORY

There are advanced and safe glassware crafts in our factory, including machine pressed, machine blown, IS machine, mouth blown and so on. Superior quality and high efficiency can be guaranteed.





# EXHIBITION

Sunny Glassware have taken part in various exhibitions since 2002 year, like Shanghai, London, Las Vegas, Hongkong show.



## Certifications



# CERTIFICATIONS



## FAQ

1) Can you combine many items assorted in one container in my first order?

Yes, we can. But the quantity of each ordered item should reach our MOQ.

2) If any quality problem, how can you settle it for us?

When discharging the container, you need to inspect all the cargo. If any breakage or defect products were founded, you must take the pictures from the original carton. All the claims must be presented within 15 working days after discharging the container. This date is subject to the arrival time of container.

3) why you choose us?

1. We have rich experiences in glassware trade for more than 20 years and the most



professional team.

2. We have 10 production line and can manufacture 15 million pieces per month, we have strict processes enable us to maintain an acceptance rate above 99% .

3. We work with more than 1800 clients in about 80 countries.

4. We offer professional one-stop world-wide logistics service.

#### 4) Can we get your free samples?

Yes, you can. Our **Samples are free** for the customers who confirm order. But the freight for express is on buyer's account.

#### 5) How about your MOQ?

Different kind products will be different MOQ, for some glassware in stock, small orders are acceptable.

#### 6) How many people in your R&D department?

We have 5 professional designers, and they will develop 15 innovative designs monthly.

#### 7) Can you give me a discount about the price?

The price depends on your quantity, if you want good price with small order, you can make more quantity in one time, and leave them in our warehouse, we will keep the goods for you until you need.

Any concerns at your side please view more glassware by following platforms.